



**Wise Owl Knits** *by Cheryl Beckerich*  
knit.learn.enjoy

# Cable Christmas Tree



## Skill Level

Easy

## Finished Dimensions

3 inches/7.5 cm in diameter at base  
6 inches/15 cm tall

## Materials

35 g Bulky Weight yarn held double or  
Super Bulky Weight yarn.  
Size 13 US/9 mm 36-inch/91 cm  
circular needle, or size needed to obtain  
gauge  
Foam cone 2.9 inches x 5.8 inches/  
73 mm x 147 mm  
Cable needle  
Stitch marker  
Tapestry needle

## Gauge

3 sts and 3.5 rows = 1 inch/2.5 cm

## Designer Note

This pattern is written using the magic loop method, but these trees can certainly be made on double point needles, on Addi Flexi Flips or any method for working a small number of sts in the round.

## Pattern

CO 24 sts. Using the magic loop method, arrange sts so 8 sts are on the front part of the needle and 16 sts are on the back part of the needle. From this point on, I will refer to the 8 sts and the portion of the needle that they are on as the front needle, and the remaining sts and portion of the needle as the back needle. In reality, with the magic loop method, the sts on the front needle are worked, then the knitting is flipped so the these sts are at the back of the work. Then the portion of the needle holding the 16 sts will then be at the front of the work in order for these sts to be worked.

You can use the written instructions below or the chart on p. 3.

**Round 1:** Join to work in the round, being careful not to twist, p2, k4, p2 on front needle, p8, pm, p8 on the back needle.

**Rounds 2-4:** P2, k4, p2 (first 8 sts on front needle), p8, sm, p8 (16 sts on back needle). From this point on, sm as you come to it.

**Round 5:** P2, c4b, p2, p5, p2tog, p2, p2tog, p5. 22 sts.

**Rounds 6-8:** P2, k4, p2, p14.

**Round 9:** P2, k4, p2, p4, p2tog, p2, p2tog, p4. 20 sts.

**Rounds 10-12:** P2, k4, p2, p12.

**Round 13:** P2, c4b, p2, p3, p2tog, p2, p2tog, p3. 18 sts.

**Rounds 14-16:** P2, k4, p2, p10.

**Round 17:** P2, k4, p2, p2, p2tog, p2, p2tog, p2. 16 sts.

**Rounds 18-20:** P2, k4, p2, p8.

**Round 21:** P2, c4b, p2, p1, p2tog, p2, p2tog, p1. 14 sts.

**Rounds 22-24:** P2, k4, p2, p6.

**Round 25:** P2, k2, p2, p2tog, p2, p2tog. 12 sts.

**Rounds 26-27:** P2, k4, p2, p4.

**Round 28:** P2, k4, p2, p3, move remaining st to front needle.

**Round 29:** P2tog, p1, c4b, p1, p2tog, p2. From this point on you will have to move sts from one portion of the needle to the other to work some of the decreases.

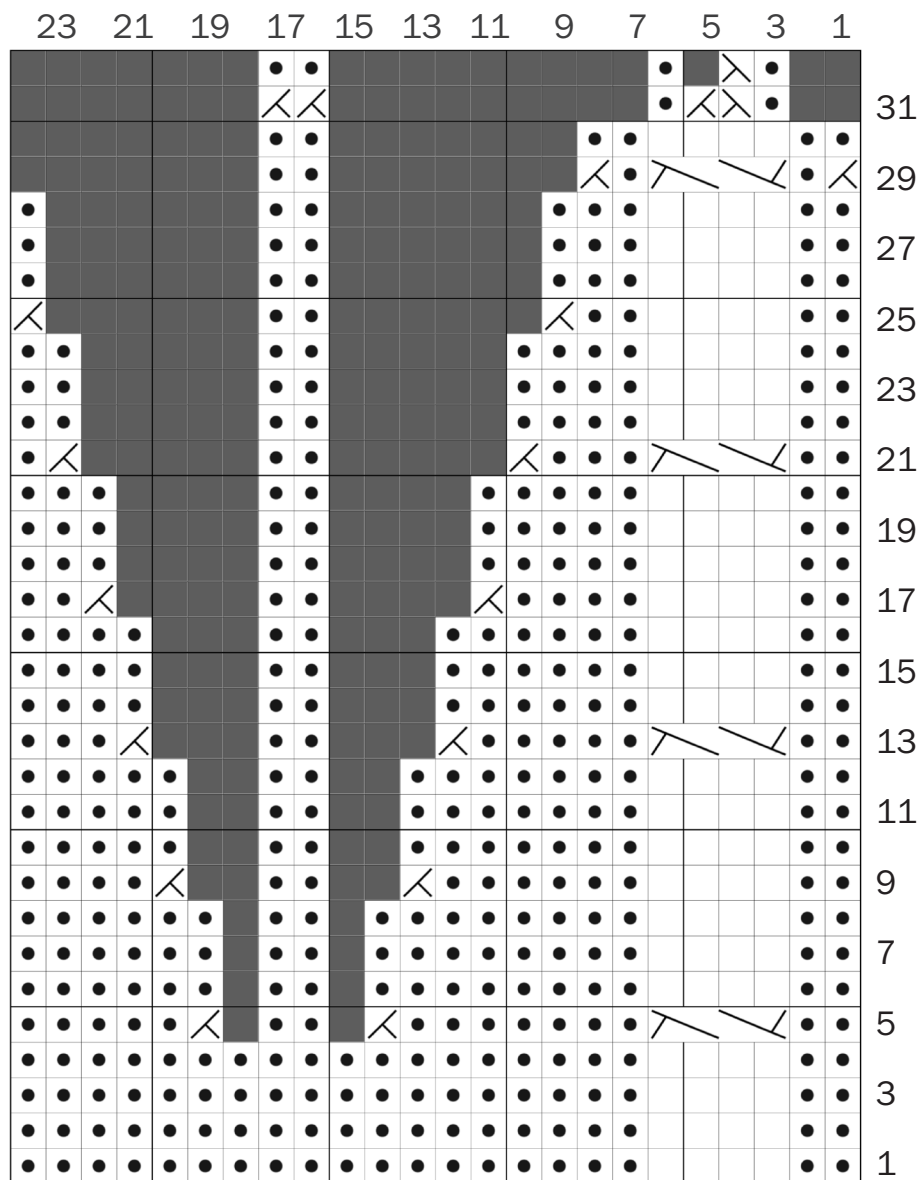
**Round 30:** P2, k4, p2, p2.

**Round 31:** P1, ssk, k2tog, p2tog, p2tog.






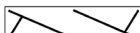
**Round 32:** P1, ssk, p3.

Cut the yarn. With tapestry needle, run the yarn through remaining live sts. Put the tree over the cone. With tapestry needle, take the yarn tail at the top of the tree to the inside of the knitting. With tapestry needle, work in the tail while also securing the tree by pulling it over the bottom of the edge of the base of the cone so that the knitted tree will not slip off the cone. See picture on p. 4.

# Chart, Key, and Abbreviations



Note: On round 28, the last st will be worked together as a p2tog with the first st on round 29. From this point on you will have to move sts from one portion of the needle to the other to work some of the decreases.

-  No Stitch.
-  Ssk - Slip, slip, knit in stockinette stitch (st st) section.
-  P2tog - Purl 2 together in Reverse st st section, k2tog - knit to together in st st section.
-  P - Purl.
-  K - Knit.
-  C4b - Slip 2 sts to cable needle and hold in back, k2, k2 from cable needle.
- CO - Cast on.
- Pm - Place marker.
- Sm - Slip marker
- St - Stitch.



For more patterns from Wise Owl Knits, visit [www.wiseowlknits.com](http://www.wiseowlknits.com), or you will find me on [LoveCrafts](https://www.lovecrafts.com). I also invite you to keep up with the latest knitting news from Wise Owl Knits Knits by subscribing to my newsletter at [www.wiseowlknits.com](http://www.wiseowlknits.com). I also blog and have videos that can be accessed from my website.

Copyright 2021 Wise Owl Knits. This pattern is copyrighted material and under the copyright laws of the United States. You may use this pattern for your own personal use and enjoyment, but may not edit, publish, copy or commercially exploit this pattern in any way.